

# **AE SERIES**

application engineered



## **AM7315 & AM7200**

High-Powered 3-Way & Mid-high loudspeakers

## **AM7212 & AM7215**

Medium-Powered Two-Way Full-Range Loudspeakers

## **AL7115**

Low-Frequency Module

## **AM5212 & AM5215**

Medium-Power 2-Way Full-Range Loudspeakers

## **ASB**

High-Powered Subwoofers

120°  
60°



## Application Engineered Series

Using the most advanced JBL transducer technology the AE Series was designed with one goal in mind, deliver performance and features system designers need and listeners demand. With a wide selection of models, high performance capabilities, reliability, and a systems approach, AE Series has a loudspeaker for just about any application.



# AE SERIES

application engineered

# AM7315 & AM7200

HIGH-POWER THREE-WAY & MID-HIGH LOUDSPEAKERS

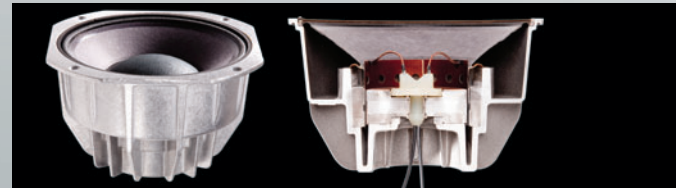
## AL7115

LOW-FREQUENCY MODULE



AM7315, AM7200 & AL7115 adds more flexibility to your loudspeaker system design capabilities. The AM7315/64 and AM7315/95 are three-way full-range models that can be either bi-amplified or tri-amplified. The AM7200/64 and AM7200/95 are two-way mid-high models that can be bi-amplified or operate as a full passive system. The AL7115 is a single 15" low-frequency module designed to work with the AM7200 models in a low-profile array application where a full-range three-way system is desired.

AE Series three-way and mid-high models utilize the latest in transducer technology. All low-frequency drivers are JBL's patented Differential Drive<sup>®</sup>, dual 3" voice coil – dual magnetic gap transducers. Three-way and mid-high models utilize JBL's CMCD<sup>™</sup>, Cone Midrange Compression Driver technology. In addition to providing increased output and lower distortion, this cone-based true compression driver design extends bandwidth (*both up and down in frequency*) to cover the entire vocal range seamlessly. All three-way and mid-high models utilize injection molded rotatable Progressive Transition<sup>™</sup> waveguides. Like the high-power two-way AE Series models, all three-way and mid-high models utilize the 2432H 1.5" exit, 3" diaphragm compression driver.



CMCD<sup>™</sup> | Cone Midrange Compression Driver

Complementing the AM7200/64 and AM7200/95 is the AL7115 15" low-frequency module. The AL7115, utilizing the PAF-3K planar array frame kit, can be fitted between two AM7200 mid-high loudspeakers to form a low-profile three-wide array. The AL7115 is equipped with the 2265HPL Differential Drive 15" transducer.

### AM7315

### AM7200

### AL7115

System Type: 15" Three-Way High Power, Full Range  
 LF Driver: 2265HPL  
 MF Driver: CMCD-82H  
 HF Driver: 2432H  
 Frequency Range (-10 dB): 38Hz-20 kHz w/ recommended active tuning  
 Frequency Response (± 3 dB): 45Hz-18 kHz w/ recommended active tuning  
 Sensitivity (1w / 1m): LF 97 dB; MF 108 dB; HF 113 dB; MHF Passive 108 dB  
 Rated Maximum SPL (1m): LF 126/132dB; MF 133/139 dB; HF 133/139 dB; MHF Passive 133/139 dB (Continuous / Peak)  
 System Nominal Impedance: 8 ohms all bandpasses  
 Power Rating (2 hr Continuous Pink Noise): LF 1000W; MF 350W; HF 100W  
 Long-Term System Power Rating (IEC 100 hrs): LF 600/1200/2400W; MHF Passive 200/400/800W (Continuous / Program / Peak)  
 Dimensions (H x W x D): 967 x 561 x 657 mm (38.1 x 22.1 x 25.9 in)  
 Weight: 45.8 kg (101 lb)



System Type: Two-Way High Power, Mid-High  
 CMCD-82H  
 2432H  
 Frequency Range (-10 dB): 260Hz-20 kHz w/ recommended active tuning  
 Frequency Response (± 3 dB): 330Hz-18 kHz w/ recommended active tuning  
 Sensitivity (1w / 1m): MF 108 dB; HF 113 dB; MHF Passive 108 dB  
 Rated Maximum SPL (1m): MF 133/139 dB; HF 133/139 dB; MHF Passive 133/139 dB (Continuous / Peak)  
 System Nominal Impedance: 8 ohms all bandpasses  
 Power Rating (2 hr Continuous Pink Noise): MF 350W; HF 100W  
 Long-Term System Power Rating (IEC 100 hrs): MHF Passive 200/400/800W (Continuous / Program / Peak)  
 Dimensions (H x W x D): 548 x 561 x 657 mm (21.6 x 22.1 x 25.9 in)  
 Weight: 27.2 kg (60 lb)



System Type: High Power, Low-Frequency  
 2265HPL  
 Frequency Range (-10 dB): 40Hz-4.2kHz w/out processing  
 Frequency Response (± 3 dB): 47Hz-3.0kHz w/out processing  
 Sensitivity (1w / 1m): 97dB  
 Rated Maximum SPL (1m): 126/132dB (Continuous / Peak)  
 System Nominal Impedance: 8 ohms  
 Power Rating (2 hr Continuous Pink Noise): 1000W  
 Long-Term System Power Rating (IEC 100 hrs): 600/1200/2400W (Continuous / Program / Peak)  
 Dimensions (H x W x D): 548 x 561 x 657 mm (21.6 x 22.1 x 25.9 in)  
 Weight: 25.9 kg (57 lb)



# AM7212 & AM7215

**HIGH-POWER TWO-WAY  
FULL-RANGE LOUDSPEAKERS**



The AM7212 and AM7215 models are designed to give you unlimited flexibility. The line consists of nine high-power two-way, full-range models featuring two additional horn coverage patterns of 60° x 60° and 120° x 60°. All models utilize JBL's patented Differential Drive® dual 3" voice coil and dual gap woofers.

The high-frequency section utilizes the new 1.5" exit, 3" diaphragm 2432H compression driver. All models utilize large mouth rotatable Progressive Transition™ Waveguides for precise directivity control. These rotatable waveguides allow the loudspeaker to be used in either the vertical or horizontal orientation maintaining the intended horn coverage pattern.

Conceived, Tuned and Balanced to provide peak performance



### Compression Driver

All nine AM7000 Series models utilize the 1.5" exit, 3" diaphragm 2432H compression driver.



### Selectable Crossover Mode

All AE Series speakers (except single driver subwoofers) offer selectable crossover modes. Two-Way speakers operate in either bi-amp or passive mode. Dual-driver subwoofer cabinets offer selection between parallel and discrete driver access.



### Connectors

All models include both Speakon® and CE-approved covered barrier strip input connectors.

## AM7212 | Five AM7212 Horn Coverage Patterns

## AM7215 | Four AM7215 Horn Coverage Patterns

System Type:	12" Two-Way, High Power, Full-Range
LF Driver:	2262H
HF Driver:	2432H
Frequency Range (-10 dB):	36 Hz - 20 kHz
Frequency Response (± 3 dB):	42 Hz - 18 kHz
Sensitivity (1w / 1m):	Passive Mode: 95 dB
Rated Maximum SPL (1m):	123 dB
System Nominal Impedance:	8
Power Rating (2 hr Continuous Pink Noise):	700 W
Long-Term System Power Rating (IEC 100 hrs):	600 / 1200 / 2400 W
(Continuous / Program / Peak)	
Dimensions (H x W x D):	711 x 369 x 458 mm / 28 x 14.5 x 18 in
Weight:	23.1 kg (51 lb)
Coverage:	AM7212/64: 60° x 40° horn, AM7212/66: 60° x 60° horn, AM7212/95: 90° x 50° horn, AM7212/00: 100° x 100° horn, AM7212/26: 120° x 60° horn



System Type:	15" Two-Way, High Power, Full-Range
LF Driver:	2265H
HF Driver:	2432H
Frequency Range (-10 dB):	34 Hz - 20 kHz
Frequency Response (± 3 dB):	42 Hz - 18 kHz
Sensitivity (1w / 1m):	Passive Mode: 96 dB
Rated Maximum SPL (1m):	124 dB
System Nominal Impedance:	8
Power Rating (2 hr Continuous Pink Noise):	750 W
Long-Term System Power Rating (IEC 100 hrs):	600 / 1200 / 2400 W
(Continuous / Program / Peak)	
Dimensions (H x W x D):	781 x 420 x 503 mm / 30.8 x 16.5 x 19.8 in
Weight:	27.2 kg (60 lb)
Coverage:	AM7215/64: 60° x 40° horn, AM7215/66: 60° x 60° horn, AM7215/95: 90° x 50° horn, AM7215/26: 120° x 60° horn



# AM5212 & AM5215

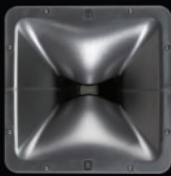
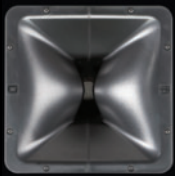
## MEDIUM-POWER TWO-WAY FULL-RANGE LOUDSPEAKERS



The AM5000 Series consists of AM5212 and AM5215 which offer nine medium-power two-way, full-range models featuring the same horn coverage patterns as the high-power AM7000 Series models.

The AM5000 Series utilizes Differential Drive® 2" dual voice coil dual gap woofers with 1.5" voice coil 2408H-1 compression drivers. All AE Series models are designed specifically to fit the needs of any discerning system designer for permanent installation applications.

As technology gets more complex, our purpose is to ensure quality and maximum usability



### Progressive Transition™ Waveguides

Provide excellent coverage control and are rotatable so the loudspeaker system can be used in either the vertical or horizontal orientation.

### Differential Drive®

JBL's exclusive dual voice coil dual gap cone transducers featuring a unique design with heat sinks integrated into the cast aluminum frame is at the core of all new AM7000 and AM5000 Series loudspeakers.

### Dual Voice Coil and Dual Gap Technology

The dual voice coil and dual gap places the neodymium magnets inside the dual voice coil assembly, completing the magnetic circuit without the heavy surrounding steel structure of conventional drivers.

### AM5212 | Five AM5212 Horn Coverage Patterns

System Type: 12" Two-Way, Medium Power, Full-Range  
 LF Driver: 262H-1  
 HF Driver: 2408H-1  
 Frequency Range (-10 dB): 37 Hz - 20 kHz  
 Frequency Response (± 3 dB): 43 Hz - 18 kHz  
 Sensitivity (1w / 1m): Passive Mode: 96 dB  
 Rated Maximum SPL (1m): 121 dB  
 System Nominal Impedance: 8  
 Power Rating (2 hr Continuous Pink Noise): 400 W  
 Long-Term System Power Rating (IEC 100 hrs): 300 / 600 / 1200 W  
 (Continuous / Program / Peak)  
 Dimensions (H x W x D): 711 x 369 x 458 mm / 28 x 14.5 x 18 in  
 Weight: 20.2 kg (45 lb)  
 Coverage: AM5212/64: 60° x 40° horn, AM5212/66: 60° x 60° horn, AM5212/95: 90° x 50° horn, AM5212/00: 100° x 100° horn, AM5212/26: 120° x 60° horn



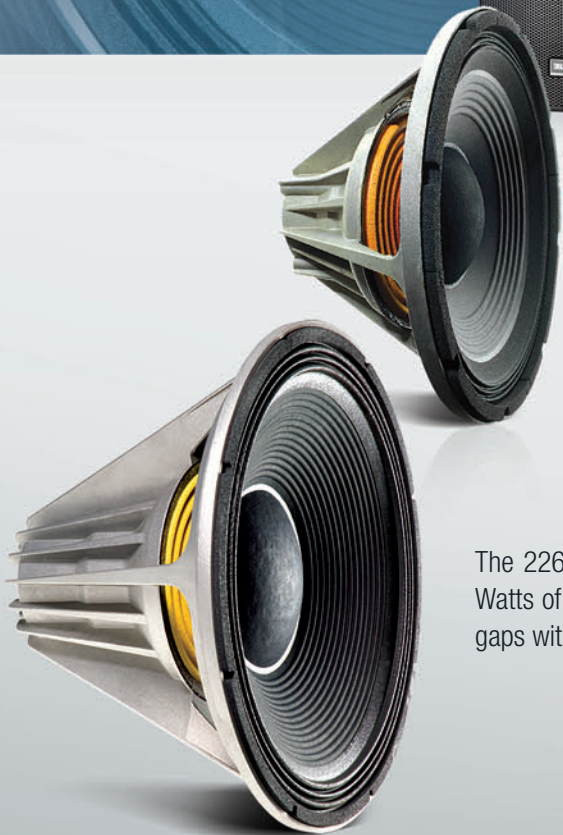
### AM5215 | Four AM5215 Horn Coverage Patterns

System Type: 15" Two-Way, Medium Power, Full-Range  
 LF Driver: 265H-1  
 HF Driver: 2408H-1  
 Frequency Range (-10 dB): 35 Hz - 20 kHz  
 Frequency Response (± 3 dB): 41 Hz - 18 kHz  
 Sensitivity (1w / 1m): Passive Mode: 99 dB  
 Rated Maximum SPL (1m): 124 dB  
 System Nominal Impedance: 8  
 Power Rating (2 hr Continuous Pink Noise): 500 W  
 Long-Term System Power Rating (IEC 100 hrs): 350 / 700 / 1400 W  
 (Continuous / Program / Peak)  
 Dimensions (H x W x D): 781 x 420 x 503 mm / 30.8 x 16.5 x 19.8 in  
 Weight: 25.0 kg (55 lb)  
 Coverage: AM5215/64: 60° x 40° horn, AM5215/66: 60° x 60° horn, AM5215/95: 90° x 50° horn, AM5215/26: 120° x 60° horn



# ASB MODELS

## HIGH-POWERED SUBWOOFERS



### JBL Patented technology In Every Model

JBL's Patented **Differential Drive**® dual-coil and dual-magnetic-gap lightweight woofers are at the core of all new ASB models providing high power, low distortion, extended response and excursion.

The 2269H 18" Driver utilized in the ASB7118 and ASB7128 models features 2000 Watts of continuous pink noise power handling, dual 4" voice coils and dual magnetic gaps with Vented Gap Cooling™ and a maximum excursion of 3.5".



ASB6112

ASB6115

ASB6125

ASB7118

ASB7128

System Type:

Ultra - Compact High Power  
12" Subwoofer

Driver:  
2263H 12" Woofer

Power Rating:  
1000 W

(2 hrs. Continuous Pink Noise)

Sensitivity (1w / 1m):

96 dB SPL

Frequency Range (-10 dB):

35 Hz - 1 kHz

Frequency Response (± 3 dB):

43 Hz - 1 kHz

Dimensions (H x W x D):

406 x 369 x 483 mm

16 x 14.5 x 19 in

Weight:

16.3 kg (36 lb)

Compact High Power  
15" Subwoofer

Driver:  
2265H-1 15" Woofer

Power Rating:  
800 W

97 dB SPL

32 Hz - 1 kHz

42 Hz - 1 kHz

483 x 419 x 597 mm

19 x 16.5 x 23.5 in

20.6 kg (45.5 lb)

High Power  
Dual 15" Subwoofer  
Driver:  
2 x 2265H-1 15" Woofers  
Power Rating:  
1600 W

100 dB SPL

32 Hz - 1 kHz

38 Hz - 1 kHz

965 x 419 x 597 mm

38 x 16.5 x 23.5 in

36.7 kg (81 lb)

Ultra High Power  
18" Subwoofer  
Driver:  
2269H 18" Woofer  
Power Rating:  
2000 W

96 dB SPL

22 Hz - 1 kHz

34 Hz - 1 kHz

546 x 560 x 815 mm

21.5 x 22 x 32.1 in

42.9 kg (94.5 lb)

Ultra High Power  
Dual 18" Subwoofer  
Driver:  
2 x 2269H 18" Woofers  
Power Rating:  
4000 W

99 dB SPL

20 Hz - 1 kHz

25 Hz - 1 kHz

1092 x 560 x 815 mm

43 x 22 x 32.1 in

71.9 kg (158.5 lb)